

Installation Instructions

TR3 LED Signals – Wayside 140mm (5.5”) - Transit Colorlight



BEFORE YOU BEGIN

Read these instructions completely and carefully.

Prepare Electrical Wiring



Electrical Requirements

- Do not use in wet locations
- Follow all National Electric Codes (NEC) and local codes.



WARNING / AVERTISSEMENT

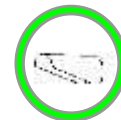
Risk of Electric Shock. Disconnect Before Servicing or installing product.

Risque de choc électrique. Couper l'alimentation avant le dépannage ou avant l'installation du produit.

Operating Specifications:

	<u>10 V Modules</u>	<u>120 V Modules</u>
Nominal Input Voltage:	12V AC 10V DC	110V AC
Voltage Range:	8V to 16V AC 8V to 16V DC	85V to 135V AC
Nominal Power Consumption:	See product label	See product label

- Always use a sun shielding apparatus such as a visor or hood if installed outdoors.
- Do not attempt to open the LED module. No assembly is required.
- Relay flashers are the only approved means of flashing the LED signal.



Testing:

When testing the lamp before installation, first check the electrical characteristics on the label on the side of the lamp to avoid damaging the lamp.

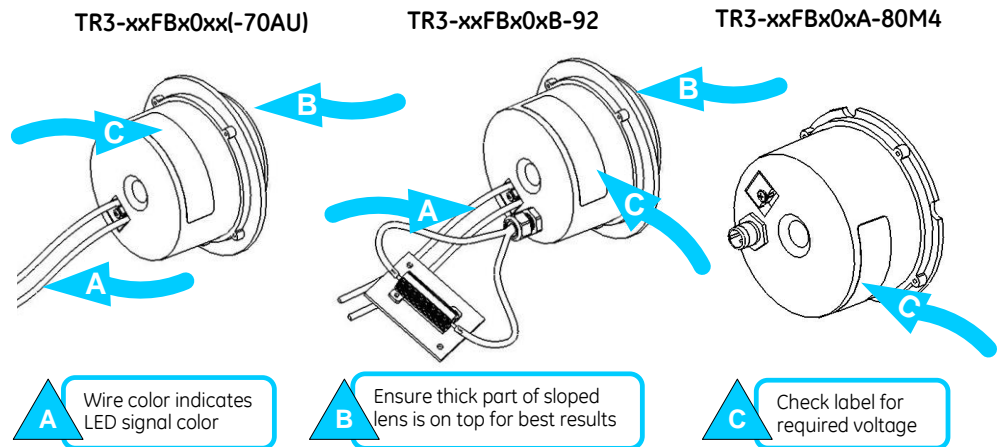
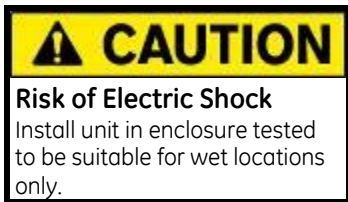
Installation Steps:

NOTE: Failure to properly follow these instructions may cause signal to malfunction.

1. **Existing signal head in the field:** Remove lens and incandescent bulb assembly from housing.
2. **Existing in-line rheostat in the field:** Set rheostat (variable resistor) to zero (0) or remove completely.
3. **Voltage settings:** Check the label on the side of the LED module to ensure the voltage corresponds to the system voltage.
4. **Color-Coded Wiring:** The module wires have been color-coded to identify the color of the signal when it is off. For example, green signals have green wires.
5. **Alignment:** If the module has a sloped front lens, rotate the module until the thick part of the lens is on top, and the slope faces downward ^(A). If the module has a flat lens, no alignment is necessary.
6. **Fastening:** Tighten metal tabs or ring over module rim.

Installation Instructions (cont'd)

TR3 LED Signals – Wayside 140mm (5.5") - Transit Colorlight



NOTE: If you prefer to have this Installation Instructions document in **other languages**, visit our official website at: www.gelighting.com/installation

GE recommends that primary and secondary surge protection be added additional to the tertiary surge protection in the lamp. Arema 11.3.3

This product is intended solely for the use of rail signaling and is not intended for use in any other application.

This device complies with part 15 of the FCC Rules. Operation is subject to the following two conditions: (1) This device may not cause harmful interference, and (2) this device must accept any interference received, including interference that may cause undesired operation. CAN ICES-003 (A)/NMB-003(A)

NOTE: This equipment has been tested and found to comply with the limits for a Class A digital device, pursuant to part 15 of the FCC Rules. These limits are designed to provide reasonable protection against harmful interference when the equipment is operated in a commercial environment. This equipment generates, uses, and can radiate radio frequency energy and, if not installed and used in accordance with the instruction manual, may cause harmful interference to radio communications. Operation of this equipment in a residential area is likely to cause harmful interference in which case the user will be required to correct the interference at his own expense.



GE Lighting Solutions • **1-888-MY-GE-LED** • www.gelightingsolutions.com
 1-888-69-43-533 • OR • +1.216.266.2419

GE Lighting Solutions, LLC is a subsidiary of the General Electric Company. The GE brand and logo are trademarks of the General Electric Company. © 2013 GE Lighting Solutions, LLC. Information provided is subject to change without notice. All values are design or typical values when measured under laboratory conditions.